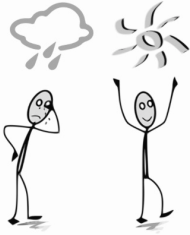


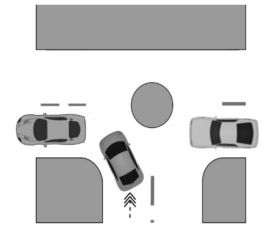
Tithe Farm & Ladygrove Residents Association (TFLRA) Summer 2017



WELCOME – to all residents!! Well, it was here one minute, and gone the next ... the sun that is, luckily not our summer. The rain is needed for our gardens, though not our BBQ's and holidays. It's not surprising then that the British folk are always known for their talk about the weather ... its so confusing!! The summer also means its time for the subs to be collected again – your contribution of a £1 helps to keep this Newsletter in print, bringing your community to your door. Thank you to everyone for your articles keep writing them!!

FAREWELL - We were sorry to see long standing residents Mary and Tony de Vere moving away in May. They had been involved in many activities in Abingdon, including Mary being a Governor of Thameside School and serving on the committee of Preston Road Community Centre for over 20 years. Both had been District Councillors in the past. We wish them well and welcome the new residents to Mill Road.

MILL ROAD / DRAYTON ROAD MINI-ROUNDAABOUT - Many thanks to the (unknown) person, who we think is from our estates, who used Fix-my-Street to press the County Council to renew the markings around the mini-roundabout. This was done in March. Now that drivers can see the Keep Clear signs, let's hope they take notice!



DRAYTON ROAD BUS STOP - TFLRA had been reminding Oxfordshire Highways about the deteriorating surface at our bus stop for almost two years now. Regular users of the bus stop have been delighted to see that the Highways Department has, at last, been able to renew the surface here. There had been some concern that the loose chunks of concrete could be knocked into the road by a bus - or onto a waiting passenger. And on rainy days, it was always obvious who the regular users were - they all stood well back from the stopping bus as its wheels sent a tidal wave of dirty water from under the broken surface towards the bus shelter!

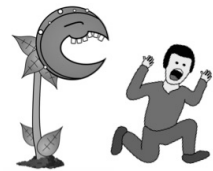
MASEFIELD CRESCENT PLAY AREA - By the time you read this, the new play equipment will have been installed in the Masefield Crescent play area by the Town Council. We now have a 'Two in One Playzone' plus a Nest Swing, which can be used by several children at the same time. The Council say that they took note of requests made by some younger members of our estates who wrote in requesting certain equipment. We look forward to seeing them enjoying the new equipment!



BURTON CLOSE / DRAYTON ROAD FOOTPATH - Burton Close/Drayton Road footpath - The Poplars Care home is currently empty of residents but its ivy covered fence is still very much there. The property was previously managed by The Camden Society, who are based in London, but it appears now to be managed by Housing Solutions of Maidenhead. At the time of writing, these two organisations are in discussion as to which of them is responsible for the cutting back of the ivy. Both organisations have been made aware that the ivy is again growing vigorously and that if it gets much worse, Oxfordshire County Council Highways will be informed that the footpath is once again obstructed. The County Council has the power to serve a Vegetation Enforcement Notice in cases of highway/footpath obstruction. We trust that the two housing organisations will sort this one out quickly between themselves.



PLANT SWAP - The weather was a bit challenging again for the Plant Swap on 20 May, though umbrellas and a pop-up marquee helped. Despite the rain during the second half of the Swap, lots of plants were brought and taken away. Many thanks to all who came.



WALK ON THE WILDSIDE by *Max the Wildlife Watcher* - One of my earliest childhood wildlife memories was camping in my back garden with my older brother and with him kicking a football, but finding it had spines! Hedgehogs are found in many habitats, rural and urban and is one of our more charming mammals as it snuffles around our under growths looking for worms, insects and slugs. They can roam an average of 2 km every night in search of food.

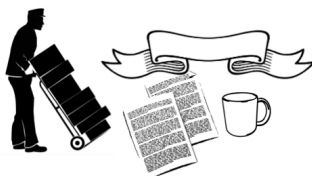


Have you seen a hedgehog recently? I haven't seen one on this estate, though it should be a perfect location. There were 36 million hedgehogs in the 1950's, today there are fewer than a million. This garden ally is on a drastic decline due to; habitat loss, road deaths, gardens being too tidy and barriers to movement and use of pesticides, such as slug pellets. With a little thought our gardens can provide an essential refuge for the humble hedgehog and stop its decline. What can we do? Don't tidy up meticulously in your garden in winter, allow overwintering hideaways. Ponds also provide a reliable water source, but ensure they have at least one sloping edge. Allow the hedgehog to move freely from your garden to the next; creating 'Hedgehog Highways'. This could be a small hole (13 cm square) at the base of a fence or replacing a fence with a hedge. Try to avoid artificial pesticides, as this could kill our slug eating friend. Be careful when moving/burning log piles, leaf litter etc. Move a bonfire before burning it, to check an unwitting animal hasn't hibernated in it.

The mammal society would like to hear from you if you have spotted a hedgehog this year <http://www.mammal.org.uk>. To find out more helpful information Google PTES and Wildlife trust and even Google 'Hedgehog street' a website to help communities show their support (I've just joined). If we all join forces in our community we could make a huge local difference. Maybe my children will be kicking a spiky football by accident in the future.



PRINTERS - We have now found an excellent printing business to print your newsletter. We thought you might like to learn more about them. County Print Finishers is a supported business run by Oxfordshire County Council. As part of Oxfordshire Employment, they have helped over 60 people in the last year whose health problem or disability is a barrier to finding and staying in work. They do this by offering people paid work in County Print Finishers to develop their employment skills; their dedicated employment team then support them to find employment and are on hand to support the person going forward to give them the best chance of sustaining in work. They offer customers a full range of printing services including leaflets, banners, mugs, or large format work, as well as data destruction and packing services to ISO 9001 and Bs15713 standards. Please feel free to contact them to find out more about their work, or to request a quotation. They're always happy to help, and if you do use their services you'll be directly contributing to supporting someone to gain employment.



<https://www.oxfordshire.gov.uk/cms/public-site/oxfordshire-employment>
countyprintfinishers@oxfordshire.gov.uk - telephone 01865 815809

DELIVERING THE NEWSLETTER - We are fortunate a good number of residents who are able to deliver the newsletters, but it sometimes happens that several are on holiday or have other commitments when the newsletter should be going out. Is anyone willing to be a back-up deliverer for these times? Just for about 20 or 30 houses. Hope to hear from you!



SUMMER SUN – The answers to the clues all contain the word “sun”.



1	A well known brand of white sliced bread	
2	What mad dogs and Englishmen do	
3	Phrase denoting Japan	
4	Morecambe and Wise's signature song	
5	Hellianthus	
6	1987 film based on a J G Ballard novel	
7	Brightly coloured synthetic drink for children	
8	George Harrison song on Abbey Road album	
9	Old fashioned yellow soap	
10	Novel by Khaled Hosseini set in Afghanistan	
11	Cocktail comprising orange juice, grenadine and ??	
12	Hollywood street and 1950 film	
13	Well known peanut butter brand	
14	Louis XIV of France was known as this	
15	You go to the Arctic Circle in June to see it	

Closing date for entries is 31st August – drop entries into 18 Mill Road or email them to tfl_ra@zoho.com
There will be a small prize for the winner!!

Answers to the Spring Newsletter quiz are: (1) Nuclear / Unclear, (2) Conversation / Conservation, (3) Beard / Bread, (4) Trade / Tread, (5) Martial / Marital, (6) Untied / United, (7) Trail / Trial, (8) Scared / Sacred, (9) Sliver / Silver, (10) Clam / Calm, (11) Grater / Garter, (12) Minuet / Minute.



COUNTY COUNCIL ELECTIONS - On 4th May, Neil Fawcett was re-elected as our Councillor for this area. He can be contacted at neil.fawcett@oxfordshire.gov.uk. The County Council has a great number of responsibilities including among other things, roads, transport, education, social and health care, and our libraries. It is possible that this will be the last time elections for the County Council are held as there are proposals to join together the six Oxfordshire District Councils with the County Council into one body, a Unitary Authority. Apparently, a decision on this proposal has to be made by a government minister, probably later this year.

UNIVERSITY OF THE THIRD AGE - U3A meets every Monday afternoon at 2pm - 4pm in Preston Road Community Centre, Midget Close. They have a speaker or an event and there are lots of special interest groups that meet at other times. To find out more about joining, just turn up at a meeting (50p at the door including tea and biscuits) or contact one of the people on their website:



<https://u3asites.org.uk/abingdon/welcome>. Last meeting before their summer break is 17th July, starting again on 4th September (best to walk over there – apparently, the car park gets very full!)



GARDENING - MY TOP TEN TOOLS (*Martin Gulliver writes*) - **Hand Fork** - use for general weeding and turning over the soil around plants. **Trowel** - use for planting small items – bedding, alpines, small perennials and the like. **Narrow Weeder** - invaluable for tap roots, especially dandelions. **Paving Weeder** - gets in between paving stones and also great for cleaning other garden tools. **Secateurs** - buy the best you can afford - Felco if possible. Expensive but will last a lifetime. Always

clean after use and sharpen regularly. **Border Fork** - for general digging and removing large plants. **Border Spade** - planting perennials and shrubs and moving larger plants. **Hoe** - slice the weed at the surface and leave to die off - also good for tivating the soil. **Pruning Saw** - pruning larger branches. Naturally if you have a lawn, a **Lawn Mower** is a must, and I would recommend a **Lawn Rake** to scarify the lawn every so often. OK that's eleven!

41 BUS SERVICE - Back in the autumn we told you that our local bus service, the 41, had been saved for the time being, although with restricted times. We were very sorry to learn that this service will now stop in July. Residents will still be able to get to the centre of town by using the half hourly X2 service but people without their own transport will find it much more difficult to easily get to the Marcham Road Health Centre and to the Tesco/Fairacres area.



WASTE AND RECYCLING COLLECTIONS - Residents will probably have noticed that there have been some more problems recently with the waste and recycling collections. Apparently a new contract is due to start later this year when we very much hope that these problems will disappear. In the meantime, as old vehicles go out of service, the substitutes being used sometimes lack the right cages for the various recycling items, which means multiple vehicles are going around the estates. And when one of these breaks down, more problems occur! If you do have a problem with your waste collection, do

contact Biffa on 03000 610610.



ADVERTS - You can also advertise your business. A full advert can go on the blog with a short summary in the paper newsletters. £10.00 for residents for the year. We look forward to hearing from you!

- **Window Wise** – *Supply and fit double glazed windows, doors and conservatories – Repairs undertaken on all double glazing – No pressurised sales – Friendly service. Ring Martin for a free quotation on 07885571778 or 01235-559334.*
- **Milk and More** - *delivered to your door! To arrange home deliveries of milk and other goods, contact Steve Enock Dairies Ltd of Milk and More. Deliveries on Mondays, Wednesdays and Fridays. Tel 0345 606 3606 email steveenock@hotmail.com.*
- **Simon's News** - *Newspaper home delivery, 7 days a week - telephone 01235-553001.*

NEXT MEETING - please see blog at www.tflra.blogspot.co.uk for the next meeting.



CONTACT - For contributions, articles, announcements or if you'd like to come along to a meeting email at tfl_ra@zoho.com or phone on our new number 07548419545 to leave a message.

Chair: Anita, 39 Masefield Crescent - Treasurer: Val, 17 Nash Drive – Editor: Kay, 36 Masefield
Blog: <http://tflra.blogspot.co.uk>