

T THE FARM AND LADYGROVE



Residents Association (TFLRA)



Winter 2017

WELCOME – The clocks went back in October, fireworks let off in November and Christmas is just round the corner. Its that time of year again - The Winter Newsletter!! As last winter, this edition brings you an extra insert with news in your area, puzzles and fun!! Wishing you all a Merry Christmas – from the TFLRA team.



FROM THE ABCD FILM SOCIETY - The ABCD Film Society is screening a programme of recent and classic films on Thursday evenings through until late March. Tithe Farm and Ladygrove residents are most welcome to attend. You can come to any film for £6 (£3 full-time school and college students) or you can join for the rest of the season if you wish. All screenings are at 7.45pm at Abingdon Health & Wellbeing Centre, Audlett Drive, OX14 3GD (which has adjacent parking). Have a hot drink before the film and chat to our members. Contact us for our programme brochure or find us online at www.abfilms.org.uk or email info@abfilms.org.uk or phone us on 01235 521976 or 01235 522163. Registered charity No. 292723. Below are our January films:

- 4th Jan - Dr Strangelove - or how I learned to stop worrying and love the bomb - Peter Sellers classic comedy - 1964 PG
- 11th Jan - Force Majeure - incisive and amusing Swedish family drama - 2014, Cert 15
- 18th Jan - The 400 Blows - absolute classic film from France, with short intro - 1959 PG

ROBINS (*by Max the Wildlife Watcher*) - When thinking of the festive season our friendly garden Robin must be one of our top images along with the snowmen and a snowy landscape. Is it because they start becoming more visible again in our gardens in winter or that they are just one of our favourite birds? Apparently, robins became symbols of Christmas-time in Britain from when Christmas notepaper showed a robin delivering the Christmas post. It seems that in those days, postmen were called robins because they wore red tunics! Male and females look identical and both sing. Young birds have no red breast and are golden brown. Robins sing nearly all year round, and despite their cute appearance, are aggressively territorial (the sole purpose of the red breast!) and are quick to drive away intruders. A patch of red triggers territorial behaviour and robins are known to persistently attack stuffed robins and even tufts of red feathers! Robins are adapted to life in poor light and are often active in half-light. They tend to be among the earliest birds to start the dawn chorus and one of the last to stop in the evening. As with the nightingale, the song is usually delivered from a concealed perch within a bush or a tree. Streetlights and floodlights can trigger singing in the middle of the night, and if roosting robins are disturbed, they can burst into song even in complete darkness. In Spring, they produce 4 – 6 eggs which are bright blue in colour. Scientists found that blue eggs absorb just the right amount of light to warm the egg, but not allow it to get too hot. Egg-cellent! So during the holiday season please remember our gardener's friend, the cheerful Robins, singing us home and give them some extra treats, with mealworms being a particular favourite.



.... AND SOME SAD NEWS - We were very sorry to learn of the death in September of Jikki Brown, of Masefield Crescent, at the early age of 44. Our sincere condolences to her family.

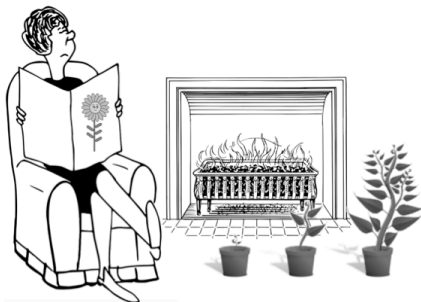


CRIME PREVENTION SURVEYS ON HOUSES/FLATS - If you would like to have a crime prevention survey carried out on your home, do contact the Abingdon Neighbourhood Policing team at abingdowntownnhpt@thamesvalley.pnn.police.uk to arrange a visit. You should also be able to ring 101 to arrange this if you are not on the internet. Some Tithe Farm residents who had experienced a burglary in the autumn found the PCSOs' advice very helpful in hopefully preventing a further incident.



FLY TIPPER PROSECUTED AND FINED - Residents will have seen local press reports in September about a fly tipper who was prosecuted and fined for dumping waste in land off Mill Lane. Unfortunately - for the fly tipper anyway - he had chosen a very wet site to unload his rubbish and his van got stuck in the mud. The Police got there before he and his friend could get their van free.

DRAYTON HOUSEHOLD WASTE RECYCLING CENTRE - And thinking more about non-household rubbish, we are hoping that the County Council's new policy of charging householders for taking DIY type articles to the Drayton Waste Centre does not lead to more fly tipping. The County Council say in explanation of their new policy that DIY type items are classed as construction waste, not household waste. Disposal of these items is expensive for councils, hence them making a small charge from 1st October. Items such as baths, old doors, bags of rubble, radiators and fence panels will incur a charge of £1.50 per item. A few items such as car tyres are more expensive. Household waste and garden waste remain free.



THE GARDEN IN WINTER (*Martin Gulliver writes*) - There isn't really a lot to do at this time of year really, except keep any weeds in check. These can proliferate in mild wet weather. If you have a greenhouse, even unheated, then tender plants can be brought in



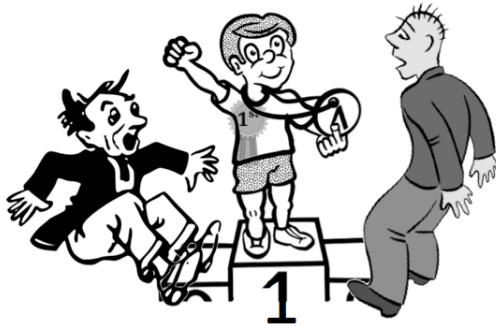
to extend the flowering. Bring strawberries in at Christmas and you'll be eating them in May next year. By now pots of violas and pansies should be in full flower - remember to keep them fed and watered as you would other containers. Planning for next year can be done now. Which plants succeeded - which didn't? It's also worth visiting the garden centres as there will be berried plants to buy and plant now. In late February, you can cut back buddleia hard, to a few inches from the ground, as it flowers on this year's new branches. This also applies to dogwoods, to produce wonderful red stems. Trim winter flowering heathers after they have flowered. As snowdrops start to fade, lift them, split up the bunches, and replant them at the same depth. Hellebores will start flowering soon - cut back old leaves to allow the new flowers to be seen.

DOG WALKERS - AND OTHER WALKERS - If you see someone disposing of bags of dog poo anywhere except in the 'dog bins', eg in other people's gardens or hedges or on the public highway - they are likely to be committing an offence and could be reported to the Vale's Environmental Protection team.



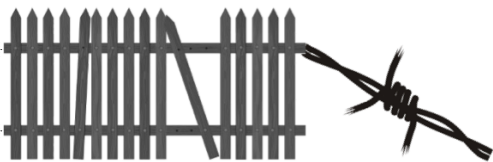
WEEDS IN GUTTERS AND VERGES - As a follow-up to the brief gutter/verge clean-up that was funded by the Vale of White Horse District council in the summer, we are hoping to be successfully included in the bid for more of this work next year. We have the support of our Town Councillors for this. In the meantime, we can only continue to press the County Council to do this work or, sadly, do it ourselves.

THAMES WATER SAYS: BIN IT – DON'T BLOCK IT! - We know that nappies and fat should not be put down our drains and loos but wipes are sometimes disposed of this way. Thames Water points out that even the wipes that say 'flushable' don't break down and can block pipes. See their advice at www.thameswater.co.uk/Help-and-Advice/Drains-and-Sewers/Blockages/What-Causes-Blockages

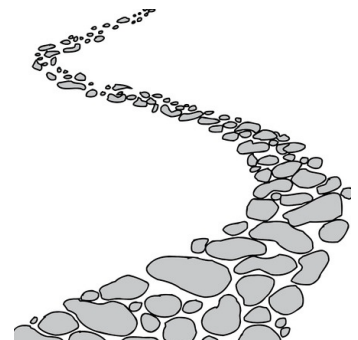


OUR 'OLDEST' RESIDENTS - Two years ago the newsletter had a piece about the memories of Eileen, who lived in South Abingdon before our houses were built on what was then farmland. Does anyone have memories of the houses of Tithe Farm and Ladygrove when they were first built? How many original residents do we have here? Who is our 'oldest' resident? Please do contact us if you have lived here when the houses were new – we'd love to be able to publish some of your memories.

AND EVEN OLDER RESIDENTS - SUTTON WICK SETTLEMENT – history on our doorstep!! Behind Masfield Park is a crop marked complex on a slight hill showing concentric rings, enclosures and parallel lines suggesting an early settlement with associated field boundaries and trackways, with a few 'sherds' and tiles found back in the 1970's. Its classed as a Scheduled Monument and was an Iron Age settlement around 800BC to 42AD and then occupied by the Romans 43AD to 409AD. This is a site of archaeological importance although the listing is so old it hasn't been digitised. 'Wick' is a medieval word used locally to describe an outlying settlement of a village or town. Some of these settlements were on poorer ground than the original settlement with its surrounding fields, and when the population decreased dramatically after the Black Death in the 14th century, they became deserted. Sometimes they've been designated as DMVs, deserted medieval villages. It seems likely that this is a DMV because it is wooded, though the designated area is much larger than just the copse. There are lumps and bumps where the house plots had been, and that has made it difficult to plough. After the Black Death there was less pressure on land for farming, so this area may have been slighted and become wooded.



RIVER PATH - It took them a year but the Vale finally arranged for the removal of the damaged barbed wire and redundant posts along the river walk. Nice job - the path is much better. Sadly, the surface of the new path is now cracking in places. We told the Vale about this who inspected it again and they say they 'share our concern'. They say that they will issue an order to remedy the cracking via a tarmac epoxy repair or similar. It is worth noting that some on the Residents' Association committee were very much in favour of the Vale using 'hoggin' when replacing the path surface was first being discussed. Hoggin is a mix of gravel, sand and clay that binds firmly when compacted and is often used for footpaths as water drains through. The Vale, however, decided to go with tarmac. We hope that this surface does not need frequent repair.



CHRISTMAS AND NEW YEAR WASTE COLLECTIONS

Normal Collection Date	New Collection Date	Bin
Friday 29 th December 2017	Tuesday 2 nd January 2018	Green / Food – no Garden Waste
Friday 5 th January 2018	Monday 8 th January 2018	Grey and Food
Friday 12 th January 2018	Saturday 13 th January 2018	Green / Food / Garden Waste
Then back to normal !!!		



REFUSE AND RECYCLING COLLECTIONS - Biffa's new lorries now go round our estates and there seems now to be fewer problems occurring with refuse/recycling collections. Textile collection however does continue to be a problem. Several residents have complained that the bags of textiles are frequently ignored by Biffa, and that even when correctly reported as a 'missed collection', the bag remains at the kerbside until the householder gets fed up with seeing it lying there. We are taking this up with a

senior officer at the Vale who we hope will be able to ensure that Biffa carries out their contract fully and properly. We will keep you updated about this on our blog.

And lastly **CHRISTMAS RECIPE – CHOCOLATE TRUFFLES** - **Ingredients are:** 4oz of dark chocolate, 6oz of icing sugar, 4oz of butter, 1 egg yolk, level teaspoon of jam, 4oz of crushed digestive biscuits plus chocolate and/or coloured sugar strands. You can also add 2 tablespoons of rum or drambuie if you like. **Method is:** Melt chocolate and butter in a basin over a pan of hot water. Add egg yolk, mix and remove pan from heat (this cooks the egg if left too long). Mix in jam, icing sugar, biscuit crumbs plus the rum/drambuie if being used. Mix well and leave in fridge for 1 hour. Roll into small balls and decorate as you wish with the chocolate or sugar strands, pop into sweet casings and enjoy!



ADVERTS

ADVERTS - You can also advertise your business. A full advert can go on the blog with a short summary in the paper newsletters. £10.00 for residents for the year. We look forward to hearing from you!

- **Window Wise** – Supply and fit double glazed windows, doors and conservatories – Repairs undertaken on all double glazing – No pressurised sales – Friendly service. Ring Martin for a free quotation on 07885571778 or 01235-559334.
- **Milk and More** - delivered to your door! To arrange home deliveries of milk and other goods, contact Steve Enock Dairies Ltd of Milk and More. Deliveries on Mondays, Wednesdays and Fridays. Tel 0345 606 3606 email steveenock@hotmail.com.
- **Simon's News** - Newspaper home delivery, 7 days a week - telephone 01235-553001.

NEXT MEETING AND CONTACT - Please see Blog at <https://tflra.blogspot.co.uk> for the next meeting. For contributions, articles, announcements or if you'd like to come along to a meeting email at tfl_ra@zoho.com or phone / text on our new number **07548419545** to leave a message.



Chair: Anita, 39 Masefield Crescent / Treasurer: Val, 17 Nash Drive / Editor: Kay, 36 Masefield Crescent