

# Tithe Farm and Ladygrove Residents Association (TFLRA)

## Summer 2019



**WELCOME** – the start of summer is a lovely time of year with the nights getting lighter along with lovely long warm days - time passes so quickly it seems often we skip from season to season in the blink of an eye!! With this edition we'll be collecting the annual subs of £1 so if you're reading this then someone hopefully has already knocked on your door.

### **PASSAGEWAY BETWEEN MABERLEY CLOSE AND FRANCIS LITTLE DRIVE**

- In March/April there was further damage to the fence bordering this passageway. The County Council has confirmed on FixMyStreet that both the fence and the passageway are privately owned and not Council responsibility. Parents may wish to be aware of the damaged and leaning fence as children are sometimes seen playing or cycling in this area.



**LOST AND FOUND PROPERTY ADVICE** - Thames Valley Police advise that they no longer deal with lost and found property. See more information at [www.thamesvalley.police.uk](http://www.thamesvalley.police.uk). They suggest that lost property can be reported on a number of online sites, such as [www.lostbox.co.uk](http://www.lostbox.co.uk) or [www.immobilise.com](http://www.immobilise.com) or [www.reportmyloss.com](http://www.reportmyloss.com) (there is a fee payable for this last service). If a pedal cycle is registered at [www.bikeregister.com](http://www.bikeregister.com), a loss report can be made to that site. If items have serial numbers, they can also be registered on the immobilise site, which will aid the Police to trace the item if it is stolen, rather than lost.

### **HOW DO BURGLARS SEE YOUR HOME?**

- A recent Thames Valley Neighbourhood Alert email suggests we can reduce the risk of becoming a victim by looking at our property through the eyes of a burglar. How would we break in if we had locked ourselves out? They suggest that we may be surprised at how easy it would be. They have a FREE Home Security Guide which can be downloaded from the Thames Valley Police website at: <https://www.thamesvalley.police.uk/police-forces/thames-valley-police/areas/advice/home-security-guide/>

This guide gives clear and very helpful advice on the security of doors, windows, outside lighting, CCTV systems and your garden, gates and fences. There is also information on protecting your possessions and digital security plus the dangers of distraction burglaries. Probably most of us have already taken these security measures but the Guide is certainly worth a look.



If for any reason you want to look at this guide but are unable to download it, let us know and we will arrange for you to have a copy.



### **COLLECTION TIMES AT OUR POST BOX**

- The scheduled afternoon collection at 4.45pm from our post box has been stopped. Instead, mail will be picked up at an unspecified time after 9.00am on weekdays (after 7.00am on Saturdays). These new arrangements also apply our other nearby post box at the top of Caldecott Road. If you need to be certain that your post will be collected on any one day, you will need to take it to the Ock Street sorting office for their late collection at 6.30pm (12.15pm Saturdays), or make sure you get to the Tennyson Drive box by 9.00am!



**GROUT GIVE-AWAY** - Does anyone have any use for an almost full bag of floor tile grout (free)? It is in a colour called Lichen, a pale silvery-green, bought at Topps Tiles in the Spring. Lovely colour, but our tiles looked better with a darker shade. Leave a message on the TFLRA email [tfl\\_ra@zoho.com](mailto:tfl_ra@zoho.com) or the mobile 07547 419 545.



**PARKING** - While our estates are less densely built than some of the newer areas, parking will often be a problem here. People may be able to get two cars on their drives



but there are often several cars owned plus any visitors' vehicles. There have been concerns recently about cars parked on junctions or being left well away from the kerb. Even if it means a bit of a walk, we hope that people can find somewhere to leave their car safely, avoiding the danger of vehicle damage or worse, damage to people.



**MARCHAM ROAD HEALTH CENTRE - NEW APPOINTMENT SYSTEM -**

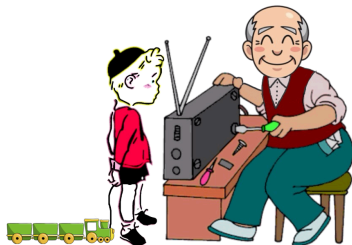
After a successful trial period, the practice is implementing a new approach to meeting patients' needs by introducing a telephone consultation system for every appointment. Patients are required to telephone the surgery on the day that they need to see a GP. They will receive a call back from the GP that they wish to see later that day and, after consultation, an appointment will be made for them as appropriate.



An explanatory leaflet has been produced for patients, and can be obtained from the surgery, downloaded from their website [www.marchamroadhealthcentre.co.uk](http://www.marchamroadhealthcentre.co.uk), or by sending a stamped self addressed envelope to the Practice Manager with a request for the appointment leaflet.



The Patient Participation Group has been involved in making these changes and is interested in your opinions and experiences of the new system. They can be contacted by sending an email [tomrhc.ppg@nhs.net](mailto:tomrhc.ppg@nhs.net).



**ABINGDON'S REPAIR CAFÉ** - The first Repair Café, organised by Abingdon Carbon Cutters and Christ Church, was apparently a great success with over 100 people turning up with things that needed mending. Their next session will be on Saturday 15th June, between 3.00pm and 5pm at Christ Church in Northcourt Road. This information may unfortunately, come too late for some newsletter readers as we will be delivering in June but have a look at the Abingdon Carbon Cutters website for updates if you are interested in



going to the session after this one.



**LOCAL SHOPPING** - The Reynolds Way supermarket may be small but has a very impressive range of food and other goods. A brisk 15 minutes walk away if you don't fancy the trip to Tesco's.



**OUR COUNCILLORS** - Our new Vale of White Horse District Councillors are Robert Madison ([robert.madison@whitehorsedc.gov.uk](mailto:robert.madison@whitehorsedc.gov.uk)) and Eric de la Harpe ([eric.delaharpe@whitehorsedc.gov.uk](mailto:eric.delaharpe@whitehorsedc.gov.uk)) - Eric de la Harpe is also now our Town Councillor. Jeanette Halliday, our other Town Councillor, was re-elected. These contact details will be on the Town Council website. We have written to our new councillors, inviting them to come to one of our meetings sometime in the future.



**LITTER-PICKING** - AbiBinit! have just done a great job litter picking in the Marcham Road area at the start of June. Next month they are in North Abingdon but will be back in the Reynolds Way area sometime in August. If you are interested in joining them, look for more information on <https://friendsofabingdon.org.uk/civic-community/abibinit-litter-picking/> or on Facebook.





**SUMMER QUIZ - SEASIDE SAFARI** - Concealed in the following passage are eighteen coastal towns in the UK. Closing date 20<sup>th</sup> July - drop entries into 18 Mill Road or email them to tfl\_ra@zoho.com. There will be a small prize for the winner!



So this was my friend's idea of a fun weekend - a country house with the opportunity to try all kinds of sports. She clearly hadn't read my Facebook profile yet. I had always found sports an ordeal, been forced to play rounders and tennis at school. In both sports I had hopefully stuck my arm out. However, I never managed to connect with the ball, but she was very determined, clearly meaning to stand over me until I agreed. She said there was an outdoor pool - even worse!



She had also invited her brother and two of his friends and owners of a shiny sports car, a popular new model. They had even brought their iPads to work with during the weekend. Maybe they weren't so keen on sports either.



We had each booked a seat on the train and there was the Uber cab right on time, to take us to the station. We arrived with over half an hour to spare, and I wondered what it was worth in gold to be struck down by a sudden illness. We arrived at this rather pretty country house and were allotted a small attic room, about ten by twelve I guessed. From the window I spotted a secluded summerhouse in the garden. On investigation, I discovered it contained wicker chairs, a shelf of novels and a pile of board games. Perfect! I felt a bit selfish guarding the door, but soon one person, then another sneaked in. Fellow sports haters! Nobody seemed to notice, and we spent a lovely, quiet weekend, a small number, wickedly breaking the rules.



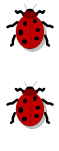
1		7		13	
2		8		14	
3		9		15	
4		10		16	
5		11		17	
6		12		18	



**SPRING QUIZ ANSWERS** - Congratulations to our winner, Pauline King of Longfellow Drive. As the draw for the winner was done just before Easter, she won an Easter Egg! The answers were:



(1) Bing Crosby, (2) British Columbia, (3) Barry Cryer, (4) Battenberg Cake, (5) Bouncy Castle, (6) Barbara Castle, (7) Bristol Channel, (8) Brian Cox, (9) Baptist Church, (10) Blue Cheese, (11) Black Country, (12) Birthday Cake.



**PLANT SWAP** - Thanks to all who came to another successful Plant Swap on 2nd June. Lots of plants were brought, lots were taken away. We thought, for once, we would have a sunny day. But 15 minutes before the swap started, the rain also started. Good for our gardens, though!



**TREE ON THE GREEN** - Residents living near the Longfellow/Wordsworth green will have seen that the Town Council Works team felled a horse chestnut tree on 17th May. A large branch had broken off and apparently it had a lot more splits, so had become dangerous. It is not clear if another tree will be planted. If it is, it will not be in the same place as the Town Council team felt the two horse chestnuts had been planted too close to each other all those years ago when the estate was first built.

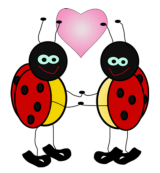




**APPRECIATE THE LITTLE THINGS IN LIFE** (by Max the Wildlife Watcher) - This is part of a longer article, now on our blog. As Spring turns into summer and the temperature rises, slow down a little and appreciate the natural world around us, while we can. In the last year there has been some long-term scientific reports printed which lead to sobering reading. A third of British wild bees and hoverflies are in decline, according to a new study. The study found 'winners' and 'losers' among hundreds of wild bees and hoverflies, which pollinate food crops and other plants. Common species are winning out at the expense of rarer ones, with an overall picture of biodiversity being lost. Lack of biodiversity in our countryside, means a lack of resilience to climate change and lack of insects to pollinate our crops and wild flowers, with a knock-on effect on the animals that feed on them eg., birds, fish, amphibians etc.

So what can we do? The researchers say actions such as wildlife-friendly farming and gardening can have a positive impact on pollinators in both towns and the countryside. Use less insecticides and herbicides in the garden. Get your political representatives to care about the environment, supporting farmers stewardship schemes that encourage more biodiversity on the farms, such as growing longer grass strips around fields to encourage insects and birds. Some local scientists are experimenting with the best combination of wild plants species to sow on grass verges to help bees etc. Encourage schools and work places to have wild areas.

More importantly, encourage the next generation to appreciate 'the smaller things in life', whether it is a ladybird (the poster star of the insect world), a hoverfly mimicking being a wasp ( they prey on small flies), a bee with its 'yellow pollen legwarmers', the wonderful shield bugs from a conifer tree or wonder at 'cuckoo spit' on grasses.



Education and appreciation is the key, making the next generation love their nature and wildlife, maybe sign them up to a charity such as [buglife.co.uk](http://buglife.co.uk) or get them involved in some local conservation talks or events. It would be lovely to think a future Britain may return to the 'windscreen phenomenon' of too many insects at night on our car windscreens.



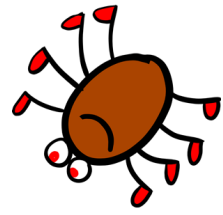
The final word is by our Natural History champion who is sometimes criticised for his TV programmes that show a positive view of the world around us, but always have a strong hidden environmental message.

*'If we and the rest of the back-boned animals were to disappear overnight, the rest of the world would get on pretty well. But if the invertebrates were to disappear, the world's ecosystems would collapse.'* **Sir David Attenborough**

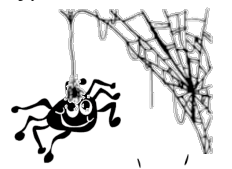


**BEE AN INSECT CHAMPION** – If you were concerned when you read Max's article on insects, you may be interested in ordering a free e-pack from the people's trust for endangered species. Sign up at [ptes.org/insectchampion](http://ptes.org/insectchampion)

**THE HUMBLE SPIDER** - by Lilian Barry (printed with kind permission of Lilian's family)



Some folk like spiders, others don't;  
Some folk clear the cobwebs, others won't  
Live and let live, I always say,  
If you don't like my cobwebs, look the other way.  
Wait!...look again, and watch the spider weave,  
Admire the splendour of his web before you leave,  
The intricacies of that finely patterned lace  
Will bring a look of admiration to your face,  
Watch the web when damp and bright with rain  
Or crystal crusted round each tiny vein;  
In very cold midwinter spider's there  
Creating works of art....or just a snare.



Many residents will remember the late Lilian, from Jephson Flats, who wrote poems for our newsletters....



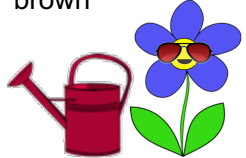




**HEATWAVE GARDENING** (*Martin Gulliver writes*) - I think we all hope this summer is not as extreme as last year - we like it warm and sunny but a joke's a joke! Here are a few tips to help the garden make it through a heatwave.



- 1) Water after the sun has gone down if possible. This gives the plants plenty of time to soak up the water before it evaporates.
- 2) Water plants under glass first, then containers, food crops, bedding and finally newly planted shrubs. Mature shrubs should be ok, and lawns will always recover, however brown they get.
- 3) Once watered, put some mulch around the base of the plants if possible, to keep the watering in.
- 4) Containers might have to be watered twice a day, and anything under glass will certainly have to be watched carefully. I have used capillary matting and trays in the greenhouse with great success – a tray will easily keep a plant watered for a week.
- 5) Another holiday tip is to move all plants into the shade whilst you are away, and ask a friendly neighbour to keep an eye on them.
- 6) There are of course plants that enjoy a hot dry summer. There are too many to list here, but grey leaves are a good sign – Lavender and Santolina, as well as plants with narrow leaves.
- 7) Weeds will still flourish of course, but hoe them rather than dig them up and they will soon wither in the heat.



**NEIGHBOURHOOD POLICING**

**Have Your Say Meetings** - please come along and speak to a PCSO about any local concerns:



- PCSO Sue Haynes - Wednesday 19th June outside Drayton Village Hall, 3pm - 3.30pm
- PCSO Sue Haynes - Thursday 20th June, outside Costcutter, Sutton Courtenay, 3pm - 3.30pm
- PCSO Miles Miller - Friday 21st June, Abingdon & Witney college 1pm - 2pm
- PCSO's Ali Blood & Jason Bauer - Monday 24th June at 10am - 11am in Abingdon town centre

**Beware of Doorstep Scammers** - Rogue doorstep traders often take advantage of warmer weather to offer home improvement ie gardening, window cleaning and gutter cleaning at attractive rates, with persistent sales techniques encouraging rushed decisions, including 'surveys' just to get your personal details. **(1)** If someone knocks at your front door claiming to be from a company, first check their ID. If you're not happy, don't let them in. **(2)** Never call the phone number on their ID - instead tell them to wait, shut the door and check them out on the internet. If they're genuine they'll understand. **(3)** Never disclose bank details.

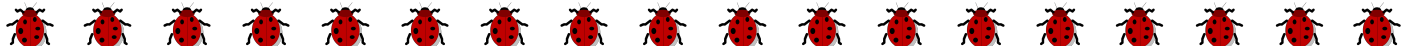


For more information on how to protect yourself from doorstep scams, visit the Thames Valley Police website:  
<https://www.thamesvalley.police.uk/advice/advice-and-information/fa/fraud/personal-fraud/door-to-door-courier-fraud/>

**Tool Marking** - In May PCSO's carried out a successful tool marking event in Abingdon with over 50 tools marked. Marking tools is a deterrent to thieves - come along to the next events with any tools you'd like to security marked or just come along for a chat:



- Saturday 29th June 10am - 2pm outside Drayton Village hall
- Friday 14th June 10am - midday - outside Abingdon Screwfix





If you're a local building company or a resident and would like further information please contact via email [abingdonNHPT@thamesvalley.pnn.police.uk](mailto:abingdonNHPT@thamesvalley.pnn.police.uk). Also check their Facebook page for further tool marking events at [www.facebook.com/TVPSouthandVale](http://www.facebook.com/TVPSouthandVale).

**Malicious Calls** - Action Fraud are warning that fraudsters are making malicious calls, pretending to be HMRC. The fraudsters tell people that action is being taken against them for non-payment of tax or similar problem. They demand immediate payment to prevent further action. The real HMRC always writes first about a problem. If this is followed up by a phone call, HMRC never demand immediate payment.

**POST PROBLEMS AGAIN** - Recently, there seems to have been a lot of misdelivered letters again on our estates. Complaints to Royal Mail bring a standard response saying that this has been reported to the manager of the sorting office who 'will take appropriate steps to prevent this happening again'. Perhaps one way of dealing with this might be if we get an idea of which roads are most affected – let us know if you have delivery problems.



**ITEMS FROM THE PAST** - Abingdon Museum has an exhibition, ending 30th June, called Rubbish! This looks at how discarded household items, documents and tools can tell us about the daily life of past societies. It also looks at what we throw away today and what that might tell future generations. Probably never intended to be 'rubbish' are other items in the museum which show us glimpses of the lives of people who lived in this area many centuries ago. An Iron Age cremation urn found in Abbey gardens, a Neolithic scoop made from an antler was dug up in the Barton Court Farm area (now Daisy Bank), and a copper awl dated between 2640 to 2200 BC is also displayed, having been discovered in the Spring Road area. There are Romano-British items on display including a child's sandal also found in what is now Daisy Bank and Saxon items including a necklace and bracelet found when Saxton Road was built. And surely never intended to be thrown away, a Saxon sword was found in the Ock in the 1870s.



Will our rubbish interest future generations?

**ADVERTS** - You can advertise your business. A full advert can go on the Blog with a short summary in the paper newsletters. £10 for residents for a year. We look forward to hearing from you!

- **Window Wise** - Supply and fit double glazed windows, doors and conservatories – Repairs undertaken on all double glazing – No pressured sales – Friendly service. Ring Martin for a free quotation on 07885571778 or 01235-559334.
- **Milk and More** - delivered to your door! To arrange home deliveries of milk and other goods, contact Steve Enock Dairies Ltd of Milk and More. Deliveries on Mondays, Wednesdays and Fridays. Tel 0345 606 3606 or email [steveenock@hotmail.com](mailto:steveenock@hotmail.com).
- **Simon's News** - Newspaper home delivery, 7 days a week – telephone 01235-553001.

**NEXT MEETING AND CONTACT** – Please see Blog at <https://tflra.blogspot.co.uk> for the next meeting. For article contributions, announcements, advertising or if you'd like to come along to a meeting, email at [tfl\\_ra@zoho.com](mailto:tfl_ra@zoho.com) or phone / text our telephone number **07547419545** to leave a message.



Chair: Anita 39 Masefield Crescent / Treasurer: Val 17 Nash Drive / Editor: Kay 36 Masefield Crescent

