

Tithe Farm & Ladygrove Residents Association (TFLRA)

Winter 2018



WELCOME - Well that year certainly has passed in the blink of an eye - one minute we were dealing with Arctic freezing conditions, then heavy rain, followed by searing heat and here we are back to chilly weather and Christmas approaching once more. We hope you're enjoying editions of this Newsletter - we try to make it varied, though of course the same old news often crops up (such is life) ... but if you have anything you'd like to ask, talk about or advertise, then please get in touch. The Newsletter is for everyone and we welcome your news too. We'll include a questionnaire about 'what you'd like to see' here in the Spring edition.

ABINGDON TOWN BUS SERVICE - By the time you read this, the town bus (Service 41) should have been running for a few weeks, very pleasing to those residents who don't use a car for shopping.



Bus No. 41					Mon-Thu	Fri	Mon-Thu
White Horse Leisure Centre		0943	1043	1143	1333	1333	1433
Hadland Road, Community Centre		0945	1045	1145	1335	1335	1435
Town Centre, Stratton Way, A4		0955	1055	1155	1345	1345	1445
Fairacres Retail Park		1000	1100	1200	1350	1350	1450
Saxton Road	0906	1006	1106	1206	1356	1356	1456
Preston Road, Landseer Walk	0908	1008	1108	1208	1358		
Caldecott, Reynolds Way	0910	1010	1110	1210	1400		
Fairacres Retail Park	0917	1017	1117	1217	1407		
Town Centre, Stratton Way, A1	0925	1025	1125	1225	1415		
Hadland Road, Community Centre	0935	1035	1135	1235	1425		
White Horse Leisure Centre	0937	1037	1137	1237	1427		



CYCLING TRAINING FOR CHILDREN - Almost everyone will have seen the small groups of Caldecott children with their cycles at the bottom of Mill Road. Their training is designed to help children aged ten to develop the skills needed to cycle in moving traffic. So please don't stop and wave them across! This can make them less aware of other, potentially dangerous, traffic. The children have a test at the end of their six week course. Most of the local schools offer this course - it is only limited by not having enough volunteer helpers. If you are interesting in volunteering, do contact the school.

CHRISTMAS / NEW YEAR WASTE COLLECTIONS - Normal collections on Friday 21st December, then the arrangements this year are:

Collections For	Collected On	Bin
Friday 21 st December	Normal collection	
Friday 28 th December	Monday 31 st December	Green and Food (no Garden Waste)
Friday 4 th January	Monday 7 th January	Grey and Food
Friday 11 th January	Saturday 12 th January	Green, Food and Garden Waste



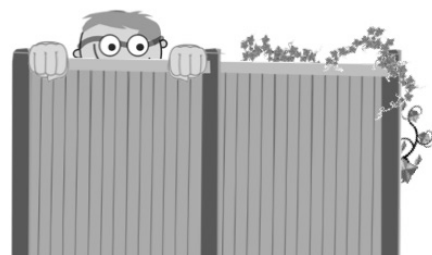
FROM NEIGHBOURHOOD POLICING ADVICE - Leave a light on and burglars in the dark! Now that our nights and evenings are dark, the Neighbourhood Policing team recommend these guidelines to help prevent becoming a burglary victim - invest in a light timer switch, close and lock all your doors and windows when going out or to bed, keep valuables out of sight, don't advertise you are away from home on social media, register your valuables with www.immobilise.com. For crime updates sign up to www.thamesvalleyalert.co.uk. And one of the Residents' Association committee also suggests leaving a radio on when going out.

CONDOLENCES – David Buckingham of Byron Close passed away on 13th October. Our sincere condolences to his widow and the rest of his family. David was one of the original residents of Byron Close, mentioned in our last newsletter.



FARINGDON ROAD CROSSING - We have been told that this long-awaited crossing, to be situated near to Abingdon School, will now not be put in place until April next year. All will agree that this further delay is a disappointment.

GUTTERS AND VERGES - At almost every TFLRA meeting, the talk goes back to our weed-choked gutters (gullies) and verges but we have yet to come up with a way forward. These are unsightly and give rise to concern that water will not flow away into drains. While the 'responsibility' of the County Council, we don't think that they have any statutory duty to clear gutters and verges. They tell residents that there is no budget for this work and, anyway, we understand that they no longer use spraying with weed-killer. While environmentally undesirable, this method was at least quick and relatively easy. Some people choose to clear their own areas. Some do not. Some kind people clear larger areas outside their neighbours', some even do a whole strip of road. The only thing we can suggest as a way forward is to share our concerns with our County Councillor, Neil Fawcett. Does anyone else have any other suggestions?



GARDENING (*Martin Gulliver writes*) - With the days of short wire fences between the gardens being long behind us now, and 6 foot fences being more common, a piece about climbers seemed a good idea. With small gardens, every bit of space is needed, and growing vertically is one answer. There are some climbers that are reliable on any aspect of fence, although north facing can be tricky. For a north-facing wall, try Ivy, or Climbing

Hydrangea as well as Roses and Clematis specifically bred for shade. David Austin do an excellent range of Roses and I have a very successful Claire Austin on a shaded fence. And there is, of course, Ivy (lots of information about Ivy in the wildlife article.) On other fences, the variety of suitable Roses and Clematis is much wider, and you can add Honeysuckle, Japanese Quince and Wisteria. When planting clematis, be sure to plant deeply and try and keep the roots shaded if possible. For all climbers, plant about a foot away from the wall so they don't get too dry, and train them back to the wall. Keep well watered in dry spells. These climbers will need wire supports, which should be put in place before planting. However there are many shrubs that can be trained to grow against a wall - Pyracantha (Firethorn), Escallonia, Cotoneaster are just three examples. Keep them trimmed close to the wall, by pruning after flowering as a rule of thumb, but try to avoid cutting off flowers that will provide berries in winter.

ABINGDON MACULAR GROUP - Age related Macular Degeneration (AMD) causes a loss of central vision, making reading, writing, crafts and any close work increasingly difficult. Do you have this condition or know anybody who has?

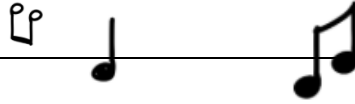



Abingdon Macular Group is a small, friendly group which meets on the second Thursday of most months from 10.30am to midday at the Baptist Church Hall, 35 Ock St. They have speakers on topics related to visual impairment or of general interest, and they also have occasional outings, lunches and activities. Friends and family members are also welcome. For more information, contact Eleanor on 01235-531857.



AN OLD PROBLEM.... - A resident is very concerned about the amount of dog mess left on the 'dog-walking' fields next to our estates, not necessarily left by dog owners from our estates as these areas are walked by many other residents of Abingdon. We said, however, that we would pass on her plea that dog mess is picked up, bagged and left in one of the dog bins in our area.

CHRISTMAS QUIZ - The answers to the clues are all secular Christmas songs. Closing date 21st December - drop entries into 18 Mill Road or email them to tfl_ra@zoho.com. There will be a small prize for the winner!



1	Having visions of a chalky Noel	
2	Strolling in Alice's country in the cold season	
3	Announcing Father Christmas's arrival in urban area	
4	Nasally challenged antler bearing animal	
5	Acquire for yourself a happy small festive season	
6	I observed female parent in illicit tryst with Father Christmas	
7	The time Father Christmas became wedged in flue	
8	Encircling Norway spruce with a swaying motion	
9	Viscum album and fermented grape juice	
10	Are they aware it is the festive season?	

ANSWERS TO AUTUMN QUIZ - (1) Olympic Games, (2) Grand National, (3) Tour de France, (4) FIFA World Cup, (5) Cup Final, (6) Superbowl, (7) Wimbledon, (8) Six Nations, (9) Cheltenham Festival, (10) London Marathon, (11) Great North Run, (12) The Ashes. The winner was Chris from Ely Close who won a box of chocolates. Well done!!

CHRISTMAS COMES TO MEDLICOTT DRIVE (by David and Marian Brown) - We both moved into Medicott Drive in 1992 and the next year we got married. Following our honeymoon, we were excited to find we were expecting our first child. In June 1994, Nicola was born and to celebrate our addition to the family, we went to Millets Farm and bought a small tree which we came home with in our car, having to drive with it sticking out of our sunroof. We decided to plant the tree in our front garden and to then watch each year go by as it grew and grew. After the tree had been in our garden for around 15 years, we came up with a wonderful idea. As at the time we had a small lively dog (called Scruffy), we felt that it was not sensible to have an indoors Christmas Tree, so we decided instead to decorate our outside tree. And from then on, it has now become tradition each November to decorate the tree ready for the switch on lights for the 1st December.



It takes a full day to prepare the tree, and our other daughter Kirsty always helps with the design of the tree to hopefully light up the street for everyone to see and to celebrate the festive season. Each year our tree grows larger and this year there will be over 3000 lights to welcome everyone into Medicott Drive. So many of our neighbours also get into the festive spirit in December, so if you're about, pop around to see our wonderful displays.

A Merry Christmas to everyone this December and a Happy New Year to you all.



ROYAL VOLUNTARY SERVICE - ABINGDON - Would you like to volunteer for 2 - 3 hours twice a month at a very friendly club for the elderly? Apart from making new friends, you can also enjoy the entertainments and outings arranged throughout the year. Main duties are serving teas and refreshments and helping to put chairs and tables away. If interested, please contact Jean Fraser on 01235 530270.

CHILDREN'S COLOURING COMPETITION - And here's this years Christmas picture for you all to colour in with crayons, pencils, paints, stickers, glitter - go mad, let your imagination flow. There are 2 categories - up to 6 years old and 6 years and over. There'll be a small prize for the winner of each category. Drop entries into 18 Mill Road and don't forget to include your first name only, age and contact number. Closing date is 21st December. Winning entries will be displayed in the Stonewater Common Room window. Good luck!!



NAME	AGE	TELEPHONE NUMBER
		<i>(not for publication)</i>

A WINTER WALK - Length of walk about an hour. Just about suitable for pushchairs and children's scooters. Sheltered from the wind and drizzle along the Ock Valley Walk. Don't forget some scraps for the ducks! Please take care when near the main road and near water.



1. **Walk from Mill Road along the main road in the direction of the town. Cross at the second set of pedestrian lights and walk across the grass diagonally on the other side. Cross the bridge to join the beginning of the Ock Valley River Walk.** There's an information board about the plants, insects and birds along the river - and watch out for a heron!
2. **Follow the main track between the quick flowing river and slower mill stream.** There are lots of places for the children to run and hide. 'Ock' originates from the Celtic word for salmon.
3. The Valley Walk ends at the refurbished bridge over the weir. **Cross and follow the pavement in front to West St Helens Street.** The flats on the left have been built on the site of the Clarke's Clothing Factory, once employing up to 2000 people, including many home workers.
4. **Turn to the right to St Helen's Church and take the path diagonally right across the churchyard and between the Almshouses to the riverfront.** On the right is the former National School building and St Helen's Mill.
5. **Turn right by the river over the Canal Companies' cast iron bridge to old Canal Company Wharf.** This is now the Margaret Brown Gardens.
6. **Enter the gardens.** Here were once busy boatyards. Look back to see the inscription on the iron bridge and notice the information board with pictures of the medieval St Helens Bridge and activities on the wharfs.
7. **Retrace your steps through the garden to the Caldecott Road.** The converted St Helen's foundry buildings are on the corner of Wilsham Road. Here steamers, tugs and launches were built for export. Above the road name the ghost sign of the former Hygienic Laundry, which later occupied the building, can be traced. Behind the building was the final lock, which lowered canal boats into the Thames.
8. **As you go up Caldecott Road** the canal terminal basin was between the twin hedges on your left. The canal route then continued all the way to and beyond the main road.
9. On the right of the road was Caldecott House, the home of the Hyde family, which finally became a Barnado's home. Relics of the boundary walls of the extensive grounds and some of its old trees can be seen, also the former lodge.
10. **At the top of Caldecott Road cross the main road at the pedestrian crossing and continue back to the estate.** The route of the canal from opposite Caldecott Road can still be traced straight on through the estate via various footpaths and alleyways to past New Cut Mill.

THE HOLLY AND THE IVY (*Walk on the Wildside by Max*)

*The Holly and the Ivy, when they are both full grown,
Of all the trees that are in the wood, the Holly bears the crown*



As winter takes it hold, we look for colour and life to decorate our homes and countryside: Holly and Mistletoe are the obvious choices, but I want you to think about the potential of Ivy (Hedera) species in your garden. It's a great plant to grow; it's evergreen, attracts wildlife and is good on north-facing walls and in areas where nothing else will grow. If you can find a spot to allow the plant to mature and grow higher than one metre, your wildlife will reap the rewards. I have mature Ivy growing in a quiet corner of my garden on an old concrete fencepost (I am glad the neighbours haven't cut it down). Adult leaves are oval or elliptical, a quite different shape from juvenile leaves. It's the adult Ivy that has so much potential in the darker months of the year.

Continued.../

From autumn to early winter adult Ivy produces greenish-yellow flowers with five small petals. These are rich in nectar so they are very popular with bees, butterflies, hoverflies and other insects for their final nectar supplies before hibernating. The Brimstone, often the last butterfly to be seen around in Autumn, is perfectly camouflaged for overwintering among the Ivy, when at rest. Many birds (Thrush, Blackbird, Wood Pigeon, Blackcap and Robin, to name a few) like the greenish-black, dark purple Ivy berries which ripen from late winter to mid-spring. Our winter 'holiday makers'; the northern visiting birds such as Redwings and Fieldfares often gorge themselves before leaving for their long journey back north to their breeding sites.

So next time you plan to do some heavy pruning in the garden, take it a little bit easier on your wilder areas, especially the Ivy. That last Brimstone Butterfly or singing Wren or Robin in winter will thank you for it. No wonder the ancient Brits thought it had magical properties.

DEMENTIA FRIENDLY ABINGDON - This is a recent initiative to help people with dementia and their carers get out and about. There are now two "Dementia Friendly Cafes" in Abingdon - they will reserve tables at regular times for people with dementia and their carers, and "Dementia Friends" will be there to welcome people, taking into account their needs. The locations and times are Fridays at 10.30am - 11.30am at 35 Ock Street (not 28th December), 1st and 3rd Tuesdays of the month at 2.30pm - 3.30pm at The Barns Café, Christchurch, Northcourt Road (not 1st January). You can find out more by contacting dementiafriendlyabingdon@gmail.com, and if you're interested in becoming a Dementia Friend, contact Healthy Abingdon on healthyabingdon@aol.com or phone 01235 525 955.

SAFE PLACES SCHEME - In July this year, the Safe Spaces Scheme for Abingdon was launched. If someone is lost, anxious, confused or feels they are being bullied, abused or harassed while out, they can go to designated Safe Places. This includes people with physical or learning disabilities, people with mental health needs or someone who feels unwell. A Safe Place displays a nationally recognised logo (pictured here). Staff will be welcoming and call a person's friend or relative for help. Vulnerable people can carry a contact card with details of someone who can be called to help. Safe places in Abingdon are currently at Citizen's Advice, the Council Offices, the Library, Waitrose and the NatWest Bank. To request a Safe Places contact card for yourself or someone you know, email communitysafety@southandvale.gov.uk or phone 01235 422 493. To find out more about the scheme go to www.safeplaces.org.uk.



ADVERTS - You can advertise your business. A full advert can go on the Blog with a short summary in the paper newsletters. £10 for residents for a year. We look forward to hearing from you!

- **Window Wise** - Supply and fit double glazed windows, doors and conservatories – Repairs undertaken on all double glazing – No pressured sales – Friendly service. Ring Martin for a free quotation on 07885571778 or 01235-559334.
- **Milk and More** - delivered to your door! To arrange home deliveries of milk and other goods, contact Steve Enock Dairies Ltd of Milk and More. *Deliveries on Mondays, Wednesdays and Fridays. Tel 0345 606 3606 or email steveenock@hotmail.com.*
- **Simon's News** - Newspaper home delivery, 7 days a week – telephone 01235-553001.

NEXT MEETING AND CONTACT – Please see Blog at <https://tflra.blogspot.co.uk> for the next meeting. For article contributions, announcements, advertising or if you'd like to come along to a meeting, email at tfl_ra@zoho.com or phone / text on our new number **07547419545** to leave a message.



Chair: Anita 39 Masefield Crescent / Treasurer: Val 17 Nash Drive / Editor: Kay 36 Masefield Crescent