

Tithe Farm and Ladygrove
Newsletter Autumn 2011

Welcome to this special colour edition of the Autumn newsletter. A grant from Digital Outreach has enabled us to produce the colour edition. The next newsletter will be back to the old black and white!

Don't forget your contributions to the newsletter are always welcome.

T.V. Switchover to Digital

The analogue signal will be switched off and replaced with a digital signal. The switchover will happen in two stages and you will need to retune your T.V.s at each stage.

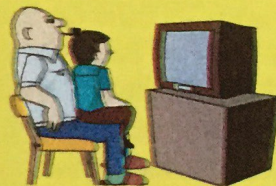
Oxford transmitter - Stage 1 on 14th Sept, Stage 2 on 28th Sept.

By now you should have received an information booklet.

You can also call 08456 50 50 50 or visit digitaluk.co.uk/central for advice or to ask for an information booklet if you didn't receive one.

HELP SCHEME

If you are: 75 or over, living in a care home for 6 months or more, getting certain disability benefits or registered blind or partially sighted, you can get FREE installation and retuning. Call 0800 40 85 900 or visit helpscheme.co.uk



If you use the Help Scheme please let us know. Phone Eleanor on 01235 531 857, e-mail eledanger@hotmail.com or drop a note in to 23 Masfield Crescent. This is for feedback required by the Digital Outreach grant scheme and your personal details will be kept private.

Events

Saturday 10th and Sunday 11th September - Heritage Weekend - Walks and Guided tours of historic places in Abingdon.

Saturday 10th - Model Railway in the Guildhall.

Sunday 11th - Boundary Walk leaves the Market Place at 11.30 a.m. - duration approx 90 minutes.

Find out more at www.abingdonheritage.co.uk or visit the Information Centre at Old



FUN in the PARK

Sunday 11th September 2p.m. – 5p.m. Abbey Grounds
Stalls, Games, Refreshments, Arena Displays, Fun for all ages!

SARP EVENT (South Abingdon Residents' Plan)

Gainsborough Green shops 2p.m.-5 p.m. Saturday 24th September

Come and take part in "Planning for Real". See a scale model of South Abingdon and put forward your ideas for improvements. There will also be fun activities and refreshments.

Redevelopment of Shopping Precinct and Charter area – Have your say

The consultation will remain open until 23rd September. You can view the plans and fill in a questionnaire at www.whitehorsedc.gov.uk/spds. There are also paper questionnaires available at the library and the Vale offices. Display boards with the plans will be in the

Bumblebees

Life has been harsh for bumblebees in recent years, since the 1960's there has been a 60% decline in the UK bumblebee population, possibly due to the 90% loss in habitat which began in the 1930's. As a result one of the most important habitats for bumblebees are our gardens. Female workers can often be seen in foraging on plants like lavender and buddleia in spring and early summer and are joined by the larger queens and different coloured males in later summer.



There are 25 species of bumblebees in the UK and a lot

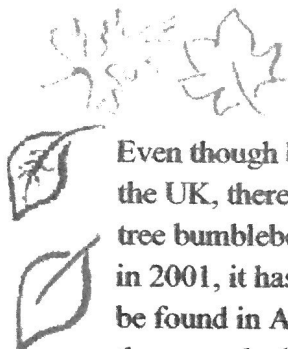
That is until it is compared to its cuckoo, which is larger and has darker wings. It will seek out the nests of the red tailed bumblebee, kill the queen and subjugate the worker bees to raise the next generation of cuckoo males and queens.



Two other bumblebees that are easily confused are the buff tailed bumblebee, with its two yellow stripes and orange tail...



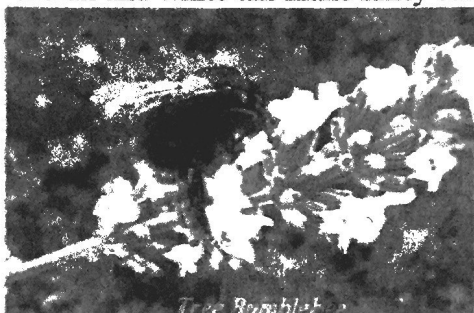
...and the white tailed bumblebee, which is almost identical except it has (as its name suggests) has a white tail instead of an orange tail. Just to confuse things, buff tails can fade making them seem white.



Even though bumblebees are declining throughout the UK, there is one that is bucking the trend – the tree bumblebee. First discovered in the New Forest in 2001, it has now spread northwards and can now be found in Abingdon. Unlike the others, its brown thorax and white tail make fairly easy to identify:



White Tailed Bumblebee



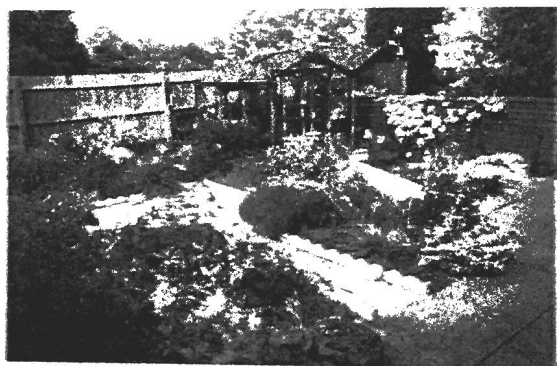
Tree Bumblebee

The bumblebee conservation trust has an excellent web (<http://www.bumblebeeconservation.org.uk/>) site with lots of information on how to identify bumblebees, attract them to our gardens and simple surveys which can help to determine the health of the local bumblebee populations.

Ockviewer

The Garden in Autumn

September often marks the start of more autumnal weather. However most bedding will last until the first frosts in November so keep deadheading and weeding. It is very unlikely that we'll get a frost until then so tender plants can still be left outside but if you want to keep them over the winter, consider taking cuttings now so that you have a chance with several small plants rather than trying to protect one large plant and risk of losing the whole thing.



This is a good time of the year to start planting new trees and shrubs, as the last few warm weeks give the plants time to settle in before the winter. You can also now start splitting overgrown perennials as they begin to die down. If the clump is big, break off the outer pieces which are fresher and discard the older centre portion. Bulb planting can start in September, particularly daffodils and crocuses although tulips can be left until November. Now is also a good time to treat the lawn by using a spring tined rake to go over the whole area, getting rid of the thatch and aerating the grass. Think about plants for winter colour. The garden centres are full of winter-flowering pansies and violas so fill a few pots and hanging baskets. If you have any permanent containers, raise them off the ground using special terracotta feet or pieces of wood, so as to assist drainage as the weather gets wetter. If the weather allows it, keep the grass trimmed so as to avoid the usual jungle-like hacking next spring when you'll so wish you hadn't left it to grow... Although the garden itself will be quiet later in Autumn, there is plenty of time now to clean pots and trays, and to sharpen and repair any tools. With a lot of growth out of the way, now is a good time to check fences, supports for climbing plants and structures such as greenhouses and sheds. It is also a good time to build/repair any bird nesting boxes. Birds will often start to investigate such boxes in the winter and the earlier they are installed, the more chance there is that they will be used.

Martin Gulliver





Autumn Quiz



The apples are ripe and ready to fall

Each clue has the word "apple" in either the question or the answer. Answers to Eleanor at 23 Masefield by 16th November.



Someone very dear to you _____

Feature of male throat _____

An apple fell on his head _____

New York _____

Neat and tidy _____

He shot an apple off his son's head _____

Hallowe'en game _____

Cockney stairs _____

Bad person corrupting other members of a group _____

Crossed with a conifer? _____

Woody growth formed on native tree by gall wasp _____

Prevents need for medical intervention _____

Practical joke bed making _____

Between Sutton Courtenay and Long Wittenham _____

Scuttles sideways across a beach? _____

Spoil plans or arrangements _____

The _____ of the moon, the _____

_____ of the sun (poem by W.B. Yeats)

Romantic name for a tomato _____

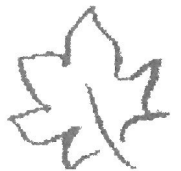
Town in Cumbria famous for its horse fair _____

Company founded by the Beatles in 1968 _____



The summer quiz proved very popular. The winner (after a draw) was Jill Henley of Longfellow Drive. Here are the answers:

- 1)raw/war 2)star/rats 3)lager/regal 4)knits/stinks 5)flow/wolf 6)straw/warts 7)avid/diva 8) repaid/diaper 9)revel/lever 10)Eros/sore 11)desserts/stressed 12)drawer/reward 13)golf/flog 14) lived/devil 15)Evian/naive 16)leek/keel 17)pupils/slip up 18)dew/wed 19)redips/spider 20)gums/smug 21)tram/mart 22)snug/guns 23)stool/loots 24)Red Rum/murder



Councillors' Surgeries - at the TFLRA Committee Meeting
Your local Councillors have been invited to the Committee meetings.

Contact details:

Samantha Bowring(Town) samantha.bowring@abingdon.gov.uk 07767 072 095

Mike Badcock- michael.badcock@abingdon.gov.uk 01235 201 810

Marilyn Badcock – marilyn.badcock@abingdon.gov.uk 01235 201 810

Mike and Marilyn Badcock- 1st Saturday of the month in the Family Room, Abingdon
Conservative Club, Ock St

Dates of the TFLRA Committee meetings: 2nd Wednesday of each month
8p.m. in the Jephson Common Room – 14th September, 12th October, 9th November–
all welcome – check beforehand in case of change.

Contact the newsletter – items for publication: Eleanor Dangerfield 01235 531857
23 Masefield Cres.- eledanger@hotmail.com. Deadline for next newsletter – 16th Nov 2011



The South Abingdon Youth Club (Step Out Club)
meets on the 2nd and 4th Fridays of each month (except August)
from 7.30pm to 9pm at Preston Road Community Centre
All 12 to 17 year olds living in South Abingdon are welcome
This is a social club with table tennis, pool, games & cafe

For more information see www.stepoutclub.org.uk.

Organised by Abingdon Vineyard Church in Partnership with local Police Community Support Officers and the
Preston Road Community Centre.

Eggs for sale, £1.50 per half dozen.



Please knock at 9 Masefield Crescent, or
call Jakki on 07917 107001.

I would appreciate the return of empty egg
boxes. Thanks!

