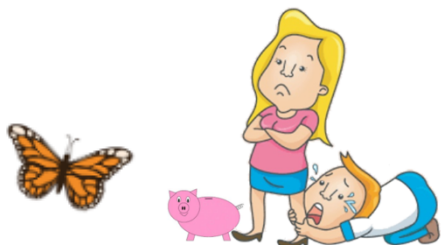


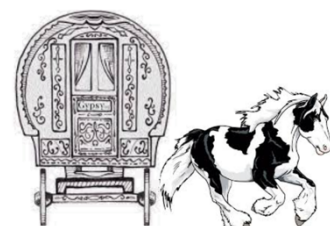


# Tithe Farm and Ladygrove Residents Association (TFLRA) Autumn 2021

**WELCOME** - Welcome to the 3<sup>rd</sup> newsletter of 2021. Did you know this has been running since 1971, though it has gone through many changes, design, committee members and moved on from a lone person with a manual typewriter to it now being computerized along with a Blog and Website (where you can find many backdated copies going back years)!! This paper version is issued 4 times a year all for the grand sum of ..... drum roll ..... £1. Yes, £1 for the whole year! This issue comes with a collection envelope for that little £1 coin - so delve into the depths of your purse, the car door pocket, deep within the sofa, the children's piggy bank?!?! 😊, pop that elusive coin into the envelope and drop it into the address on the front. If there is no 'return address' label, someone will call back later to pick up the envelope.



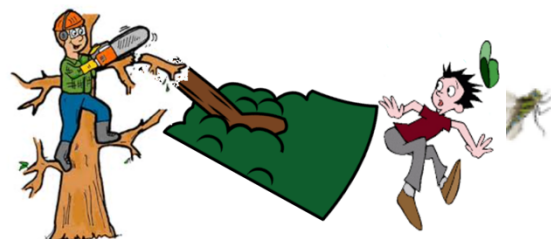
**JUNE ROMA ENCAMPMENT** - To the dismay of local residents, a group of caravan dwellers appeared again in the field behind Orpwood Way in the middle of June. The entrance defence of the 'concrete lego blocks' had proved totally ineffective, as it appears that these could be easily pushed aside. Thankfully, although piles of rubbish were left behind again, this group did not cause the immense problems that the earlier group did. We understand that this group were actually Roma (ie not Travellers) and were on their way to the Appleby Horse Fair. This time, the Police, the Gypsy and Traveller section of Oxfordshire County Council and the Vale District Council all worked together to serve the appropriate notices to leave on the group and they left on 21st June.



**THE FUTURE OF THIS FIELD** - As we have mentioned in earlier newsletters, the Vale District Council own this field, together with other fields off Mill Lane. It had been leased, but the lease had come to an end, so leaving the owners, the Vale, with responsibility for starting the eviction process. The Property team at the Vale confirm that negotiations are in progress for the field to be leased out again but they cannot give us any more details. We hope that this change of lessee will not affect our access to this area as so many of us enjoy walking around the field with the Ock running alongside.



**TREES ON MASEFIELD PLAYING FIELD** - In our last newsletter, we mentioned the work on these trees carried out by contractors working for Abingdon Town Council. One tree was removed completely as it was diseased. We asked the Town Council if they intended replacing the tree - this is their reply:



*Yes, the tree will be replaced although not sure what species it will be replaced with at the moment. Once we have a few trees needing replacement after completing the works from the recent tree report we will order a few at the same time and replant in the same/more suitable locations.*

**THE EAMON BULL MEMORIAL SKA AND REGGAE NIGHT** - Saturday 2nd October at 7.30pm until midnight at Abingdon Rugby Club Lambrick Way Abingdon. Come along and try out your best dancehall moves, and Skank the night away to "The Conspiracy of Sound Sound System" with DJ Mike Sandiford. Tickets are £5 and are available from Alan Hutt on 07834506180 (due to restricted numbers entry by advanced tickets only). Eamon sadly lost his battle with cancer earlier this year and all proceeds from this event are going to Team Mikayla who grant wishes to children and their families who are fighting cancer.





**'ART WORK' ON ROUNDABOUT!** - Almost everybody will have noticed the structure on the Caldecott Road / Drayton Road roundabout. Does anyone know who did it and why they did it? It seems to be rather enjoyed by many and doesn't appear to be traffic-hazardous in any way. The Abingdon Blog wrote about this on 16th July - 'Backstreeter' who writes the blog also seemed amused and puzzled about the 'who and why' - as were the people that commented on his piece. Please do let us know if any of you out there know more about it!



**NEW ABINGDON TOWN CEMETERY** - Back in spring 2019, we had an article about reports that Abingdon Town Council were considering options for a new cemetery as the existing one off Spring Road is nearly full. At that time, we were informed by former Cllr Mike Badcock that one of the options was part of the field behind Masefield Crescent. Apparently, things have moved on, as reports from a Town Council meeting at the end of July this year said that the Council is now in a position to move forward with their plans. We understand that they are looking in particular at land behind Masefield Crescent, not the Masefield playing field itself as was implied in an article on the Abingdon Blog! As this field is owned by the Vale Council who have leased it out, negotiations could take some time. The Town Council will also have to arrange for various technical surveys of the area, such as checking the suitability of the land drainage. If a cemetery does open at this end of town, while this will mean some additional traffic through or near our estates, it is hoped that this will not create too many problems. We have been told that, at the moment, there are about 100 burials a year, so only about two a week.



**FREEBIE DAYS** - Residents have had two more 'Help Yourself' days at the start of July and September. While not so many of us put out our unwanted odds and ends as we did in May, these were still enjoyable events with interesting items available to be taken away for free. And what a good idea to tie balloons to a post or bush outside your house to signal that there are freebies available here! Some residents have suggested that we have one more freebie day before the weather gets too chilly and uninviting to browse. They have suggested that Saturday 2nd October would be a good day to try this again, so if those unloved and unwanted items are still available at the start of October, put them out and see if someone wants to take them home. But do avoid potentially dangerous items like sharp knives.



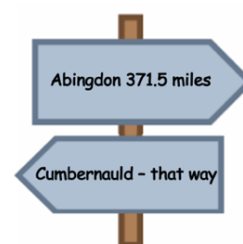
**VOLUNTEERS WANTED FOR CITIZENS' ADVICE IN NON-ADVICE** roles - Abingdon, Didcot, Henley and Thame Advice centres are looking for volunteers to help manage the organisations. In particular, they are looking for people who can offer one day a week to help with things like fundraising administration, IT support, campaigns work and office administration, plus other non-advice work. If you are interested and want to find out more, contact them at [citizensadvice.org.uk/local/Oxfordshire-south-vale/volunteer/](http://citizensadvice.org.uk/local/Oxfordshire-south-vale/volunteer/)



**BROWN BINS** - At the time of writing, we have just been told that our brown bin service for garden waste remains suspended. Biffa, contractors for South & Vale District Councils, are still unable to find sufficient HGV drivers, as are many other organisations. South & Vale are committed to providing us with at least 20 garden waste collections during the year in return for our annual payment. If they can't do that, they are going to have to look at ways of compensating us. Refunds? Extension of date for annual renewal? Reduced payment for next year? We will have to wait and see what happens here.



**WRONG POST** - A resident in Masefield wonders if the letter she received takes first prize as being the 'most' mis-directed. The letter was addressed to Mrs \*\*\*\*\*  
\*\* Masonfield Avenue, Balloch, Cumbernauld (Scotland). The only correct part for her address was 'Mrs' and the number. It had travelled all the way from Glasgow (near Cumbernauld), only to be posted back.



**QUIZ AUTUMN 2021 - OLYMPAGRAMS** - The following are anagrams of the names of British gold medal winners in this Summer's Olympics. Once again, drop your entry into **21 Mill Road** - OR - email to **tfl\_ra@zoho.com** - OR - complete online for submission at **https://tflra.weebly.com/quiz.html**. There will be a small prize for the winner! Closing date 9<sup>th</sup> October. Good luck!



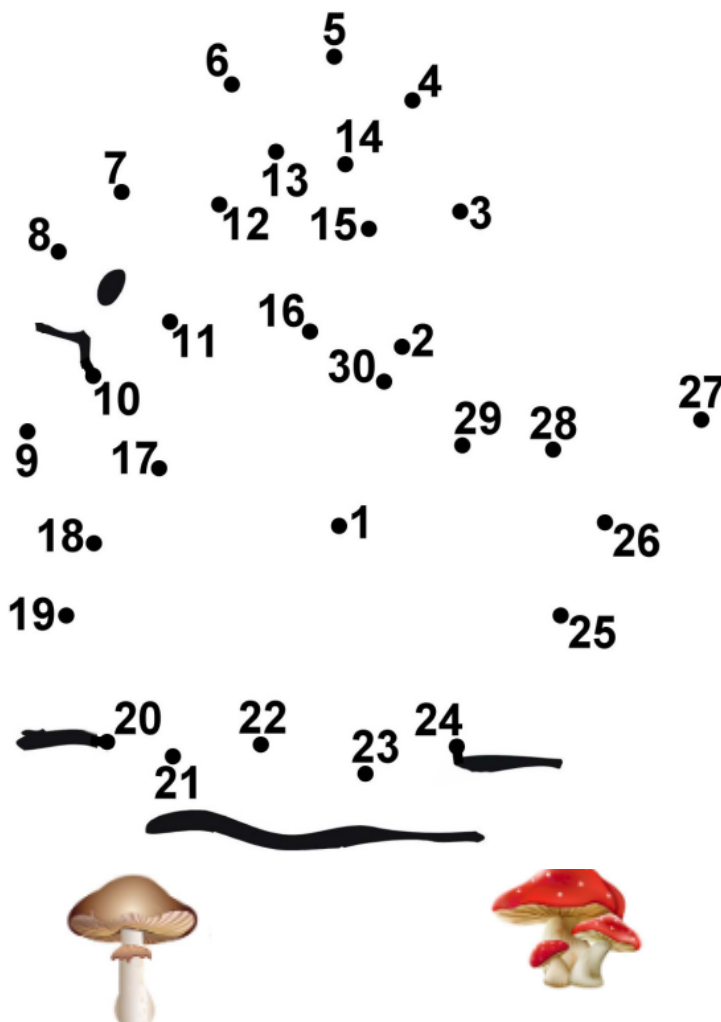
1	NEURAL YANK	
2	TOY MEDAL	
3	LET MY TEA	
4	TANKER CHEF	
5	MY APE DATA	
6	TIP MOCK COD	
7	COLT HAWK MIX	
8	ORNATE TORCHLIGHT TOWN	
9	HEN HEIST BRAVERY	
10	JOG ON ECHO	
11	REPLACE RUIN	
12	ANT DOME	
13	CONDUCT ANTS	
14	THY DANCER FELL	
15	JAILERS MOUSTACHE	
16	WEAK HAND STOLEN	



**SUMMER 2021 QUIZ ANSWERS - SUMMER SUNS ARE GLOWING** - (1) Bring Me Sunshine In Your Smile, (2) Here Comes the Sun, (3) You Are My Sunshine, (4) The Sun Has Got His Hat On, (5) Summertime, And the Living Is Easy, (6) Summer Loving Had Me a Blast, (7) Good Day, Sunshine, (8) We're All Going On a Summer Holiday, (9) In the Summertime When the Weather Is Hot, (10) Singing in the Rain, (11) I Can See Clearly Now, the Rain Is Gone, (12) Don't Rain On My Parade, (13) A Hard Rain's Gonna Fall, (14) Rain Drops Keep Falling On My Head, (15) Purple Rain. The winner was Richard of Wordsworth Road - well done!!!



**CHILDREN'S DOT-TO-DOT** - Just for fun, no prize. Can you tell what it is?



**ANSWERS TO CHILDREN'S SUMMER SCAVENGER HUNT** - (1) 7.00am, (2) Not pick up your dog's mess/play ball games, (3) 6, (4) Hedgehogs, (5) (28, (6) End of (cycle) route, (7) 9, (8) 18.

All the winners got a little prize!! Well done!! 😊



## GARDENING - SLUGS AND SNAILS *(Martin Gulliver writes)*

These are a perennial problem, more so following the recent wet weather. Slug pellets will work, and organic ones are now available that will not harm wildlife. In a perfect world the garden would be ecologically sound insofar as birds, hedgehogs and frogs would snap them up. There are physical barriers that can be used, and I have heard coffee grounds and eggshells suggested. There is also the usual torchlight search at dusk when they are most active. Copper strips are effective, either around pots with vulnerable plants, or made into collars to go around plants in the ground. The alternative is to use plants that slugs seem to ignore. These include anything with aromatic leaves - lavender, rosemary and similar herbs. They also avoid foxgloves and hardy geraniums, such a useful plant around the garden, plants with furry or sharp leaves such as Lady's mantle or dianthus, poppies, alliums and astrantia are also usually safe, ferns, euphorbia and Japanese anemone I have also found to be unfavoured by slugs and snails.

Bedding plants are more difficult, but they seem to ignore begonias, busy-lizzies, antirrhinums and penstemons.

In general slugs go for old weaker plants and freshly planted items. So keep plants well fed - once a fortnight with either Miracle-grow or a tomato fertilizer is fine.

Incidentally - snails are good climbers so try not to leave vulnerable plants close to where a determined snail can vault from one plant to another!

**ALLOTMENTS IN ABINGDON** - We haven't mentioned allotments for a long time although we know that a number of residents do rent these - they are often the ones you see cycling home slowly at the end of a long day, with a carrier full of produce. Abingdon Town Council owns the three allotment sites in our town, which are all managed by Allotment Associations. Contact details are on the Abingdon Town Council website. We should point out now that all the Allotment Associations do have waiting lists of various lengths for plots and one requirement for all these allotments is that you are an Abingdon resident.

Possibly the nearest to us are the Drayton Road Allotments, although this does seem an odd name, since they are near the far end of Preston Road. We have been told that the contact details will be changing in September, so we suggest you contact the Town Council if you need any information. At the other side of the Marcham Road roundabout are the West End Allotments. Their contact details are [westendallotmentcommittee@gmail.com](mailto:westendallotmentcommittee@gmail.com). And right at the far end of town are the Wildmoor Allotments, off Long Tow, who can be contacted at [wildmoorlettings@gmail.com](mailto:wildmoorlettings@gmail.com). This Allotment Association has a very helpful website, with one section listing the five things to consider before applying for an allotment. Are you an Abingdon resident? Do you have the time? And the energy? And the commitment? And is the location suitable for you?

If you want to get more involved in gardening without the commitment of an allotment, you may like to think about volunteering at the Stonehill Community Garden off Oday Hill. They grow fruit, vegetables, produce eggs from their hens and honey from their bees. Contact them at [info@stonehillgardens.co.uk](mailto:info@stonehillgardens.co.uk).



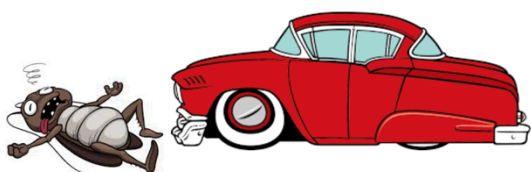
**FRONT GARDEN COMPETITION?** - A resident has suggested that we have a competition for the best front garden next year. Let us know you like this idea and whether you think it should be a best spring garden or a best summer garden competition. We will have to find a couple of independent judges from another part of Abingdon! If you'd like to take part, simply drop us an email at [tfl\\_ra@zoho.com](mailto:tfl_ra@zoho.com) or phone / text our telephone number **07856 869 335** to leave a message, or fill in the form on the TFLRA website at <https://tflra.weebly.com/front-garden-competition.html>.



**HEDGES AND SHRUBS** - Can we put in a plea to all residents? Please, please do check your hedges and shrubs that border on our pavements. There are a few places where the greenery has grown so much over the footway that it is very difficult for people with pushchairs, on mobility scooters or with limited eyesight / mobility to pass the house safely, and it could obscure driving sightlines when coming off a driveway. It does seem so unneighbourly to report these obstructions to the County Council on the FixMyStreet website - no-one really wants to do that, but over-abundant growth is a concern to us all.



**DREAMS OF SUMMER MEADOWS** - As the temperature drops and the starry nights get longer, you may be busy prepping the garden for the winter. If you care about wildlife, try and allow some of your garden to be unruly, with log/stick piles and not deheading your flowers. It allows a place for our insects and invertebrates to survive the winter. Any fruit that has fallen, could be left as a pile in the corner for food and to rot away. My garden is not large, but I plan to leave an area for a mini meadow and need to think about it in Autumn. It was uplifting that more gardens are letting their lawn go longer in Spring and Summer. Regarding meadows, the [plantlife.org](http://plantlife.org) website explains it all. But you have two major options: **Spring meadows** (cut first time in late June to 5cm, allowing flowers to set seed). Remove all cuttings, wildflowers grow better in low fertility. Over a few years you may see cowslips, primrose and lady's smock, or adding wildflowers seeds or plant plugs boost these plants. **Summer meadows** (cut regularly from mid-March to mid-May to a length of 5cm, remove cuttings, then leave until August or early September). Hopefully you will see ox-eye daisies, field scabious and knapweed. Some lawns I have heard of in Oxford have even grown bee orchids, but that depends on soil type and how many years have there been no weedkiller or fertiliser use. My modest garden lawn so far, has produced small plants such as daisies, speedwell, self-heal, buttercups and clovers, but the bees seemed happier. I now hope to give my 'back garden meadow' a bit of a boost - I added some seed bombs to the area in early summer to a dark grassy area. However, in Autumn I am adding a nature's secret ingredient 'yellow rattle'. This is semi-parasitic plant on grasses and allows wildflower plants to gain a competitive edge.



This year I had a go at the Kent Wildlife trust 'splatometer' in summer and took part in their survey, which allows you to use a mini grid, and download an app, to follow a car journey and then take a photo of the insects that had been splatted on your number plate!! A bit macabre, but a valuable tool in

citizen science. I just hope if more gardens or even balconies can help our mini beasts a little bit more, together we can make a huge impact. Maybe the 'splatometer' in future years, may have a more positive result. Hopefully the future will be buzzing!

**OLIO** - We have mentioned the Freegle website a couple of times, where unwanted items can be offered (for free) to local people, the aim being to prevent land fill waste. Less well known is the local Olio website. This site concentrates on unwanted food items being offered for free - things like some surplus bread nearing its use-by date or perhaps that unopened gift of spices that you really, really do not like! Again, its aim is to avoid waste.





**NEW VENUE FOR COMMUNITY FRIDGE** - The Community Fridge has moved from Audlett Drive to a new home in Hadland Road, in the north of the town and is now operating from Hadland Road Community Centre OX14 3YH. At the time of writing, it is open three times a week - Mondays 5pm - 6pm, Thursdays 2pm - 3pm and Saturdays 10.30am - 11.30am. The Community Fridge collects surplus food from local supermarkets and redistributes this to the local community, so saving a great deal of food waste. Everybody and anybody is welcome to visit them to pick up food items.



**NEW TOWN COUNCILLOR** - Hi! I'm Rawda your Town Councillor for the Fitzharris Ock, since the elections in May 2021. To tell you a bit about myself, I moved to Abingdon from Surrey 18 years ago with my husband and two daughters who are now grown up. We have had many happy times and made great friends here! My career has mostly been spent working in local independent department stores, most recently at Boswells of Oxford until its closure last year. Outside of work I enjoy travelling, going to the theatre and listening to classical music. I am also very keen on fitness and going to the gym. My first few months as a Councillor have been enjoyable and I'm really excited about supporting the local community. I took up several roles serving on the Community, Guildhall and Platinum Jubilee committees. We're working on some very exciting plans for the Platinum Jubilee next year which we hope will be a great opportunity to celebrate the Queen's platinum jubilee whilst coming together as a town and supporting local business. I look forward to hopefully meeting you soon and having a chat! I am here if you need help and my email address is rawda.jehanli@abingdon.gov.uk



**ADVERTS** - You can advertise your business. A full advert can go on the Blog with a short summary in the paper newsletters. £10 for residents for a year. We look forward to hearing from you!

- **Window Wise** - Supply and fit double-glazed windows, doors and conservatories - Repairs undertaken on all double glazing - No pressured sales - Friendly service. Ring Martin for a free quotation on 07885571778.
- **Jazzercise Wantage** - Jazzercise is the original dance party workout. We fuse dance cardio with kickboxing, pilates and strength training - set to the hottest playlists. Come and join the fun, all fitness levels welcome. Currently meeting Tuesday and Thursday evening at Milton Hill House, Milton and Saturday mornings at Snells Hall, East Hendred. For more information contact: Tel. 07917 205372 or email: jazzercisewantage@outlook.com - Facebook & Instagram: @jazzercisewantage
- **Oxford Kitchens and Bathrooms** - One of our residents is a director of Oxford Kitchens and Bathrooms, based locally in Wootton. They are entering the 42nd year of trading in 2021, with the same management that started the business in 1979. Their website is at [www.oxfordkitchens.co.uk](http://www.oxfordkitchens.co.uk) if you would like to know more about them.
- **Forever Aloe Vera** - Aloe has natural soothing, cooling and moisturising properties. Our range of drinking gels are great for skin health, the immune system and is an ideal digestive aid. Our bottles also contain vitamin C which contributes to a natural energy-yielding metabolism. In five flavours! Contact Charlotte Membury for further information or advice on how Aloe can help with your health on 07850 198846 or email [charlottemembury@gmail.com](mailto:charlottemembury@gmail.com) or visit: <https://thealoeveraco.shop/9olpExEY>



**NEXT MEETING AND CONTACT** - The regular 'in person' meetings are currently postponed, but residents are most welcome to join future meetings, either on Zoom or a meeting on Wordsworth Green (weather permitting). Do check the Blog / contact us beforehand to check for dates. For article contributions, announcements, advertising or if you'd like to come along to a meeting, email at [tfl\\_ra@zoho.com](mailto:tfl_ra@zoho.com) or phone / text our telephone number **07856 869 335** to leave a message.



**Chair:** Anita 39 Masefield Crescent / **Treasurer:** Val 17 Nash Drive / **Editor:** Kay 36 Masefield Crescent

